



STAFF ONLY

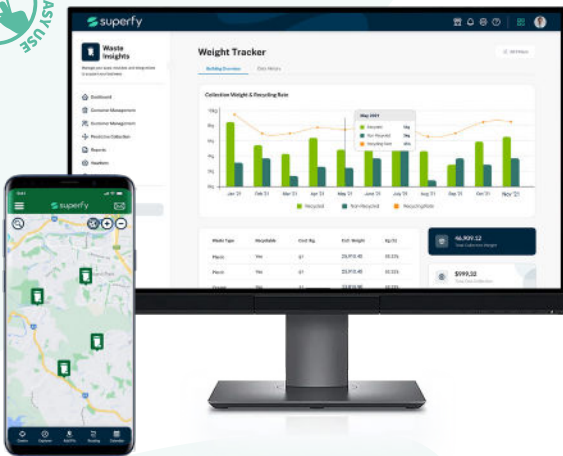


CheckIN™ for Smart Asset Interaction Tracking

The **Superfy CheckIN™** is a passive, secure NFC tag that can be attached to assets to store and track interaction with the asset.

The puck uses a secure NTAG424 NFC tag to secure the asset id. The technology is protected from being overwritten or changed.

In combination with the smartsensor app, the NFC puck can provide asset specific data to the users in the field to save time and money in management and documentation.



Product Features

- Ruggedized NFC Tag
- Secure NTAG424
- No power needed
- ~1.6-mm Resolution
- Updates with smartphone APP
- IP66 Rated Enclosure

NFC Tag

An NFC tag under the cover utilizes a secure NTAG424 NFC tag to secure the asset ID.

Hardened Plastic Enclosure

Hardened plastic enclosure allows for robust installation in harsh environments.



IP66 Rated

Enables high pressure washer cleaning.



Typical Applications



Asset Identification



Asset Interaction



Entrances and Exits



Building and Industry Maintenance